



**Buxton Opera House**  
**Technical Specification 2026**  
**Revision G**

**Contents**

Contact Details .....	3
Location and Parking .....	3
Access .....	3
Bus power.....	4
Stage.....	5
Dimensions .....	5
Flying.....	5
Softs .....	6
Hard Equipment .....	6
Access Equipment .....	6
Orchestra Pit .....	7
Prompt Desk .....	7
Environmental consideration .....	7
Wardrobe .....	7
Lighting .....	8
Standard Rig .....	8
Dimmers.....	8
Control .....	8
Control Position.....	8
Temporary Power .....	8
Lx Gallery Power .....	8
Stage (MSL) .....	8
Follow Spots .....	8
Additional fixtures .....	9
FX.....	9

Accessories.....9

Sound..... 10

PA .....10

**Stalls:**..... 10

**Dress Circle:** ..... 10

**Upper Circle:**..... 10

**Gallery:**..... 10

**Front Fills:**..... 10

Control .....10

Mix Position.....10

Comms .....10

Temporary Power .....11

    Sound Power DSR..... 11

Additional equipment .....11

Dressing Rooms ..... 12

Appendix A ..... 13

    Stage Plan .....13

Appendix B ..... 14

    Standard Hanging Plot.....14

## Contact Details

Please note that Stage Door is not manned when there is no show in the building.

Department	Detail
Technical Team	01298211882 <a href="mailto:technical@BOH.org.uk">technical@BOH.org.uk</a>
Stage Door	01298211877
Box Office	01298 72190
Administration	0129872050

## Location and Parking

### What Three Words

Dock Door [///snack.retrial.desiring](https://www.threewords.com/snack.retrial.desiring)

Stage Door [///ogre.next.upon](https://www.threewords.com/ogre.next.upon)

**Parking for commercial vehicles will be on Water Street, which is where Stage Door is located, opposite the Old Club House pub.** There will be an area coned off, on the Opera House side of the street where load-in/load-out vehicles can be parked in. The road is on a hill so please park trailers with the cab downhill of the doors.

On street parking is free after 6pm or there is free parking on Burlington Road. Please note that cars cannot park within the coned area without a ticket.

Bus parking is downhill of the loading doors, allowing space for the show load in, and uphill of the loading door. Arrival and Departure time must be confirmed with the Technical Team at the venue prior to the show due to limited space and parking available.

## Access

BOH stage is below street level and access using a scenic lift or staircase down stage left direct from the road and pavement.

Item	Detail
Get In Doors opening	4.2m high, 3.m wide approx.
2.25 tonne Scissor Lift	2.9m Long (on / off stage) x 1.5m wide
Steps from street down to stage.	13 steps

It is recommended that touring staff wear Hi Visibility clothing while working on the street.

**Bus power**

There are sockets located either side of the Get in Doors above head height, which may require a small pair of ladders to make the connection. Cable matting will also be required to cover the cable where it crosses the public domain.

Qty	Item	Size
2	16a Cee Form	1 Phase, Neutral, Earth

**Please note:**

BOH will not supply steps, cable, or cable matting, to facilitate connecting the vehicles to the power supply.

BOH accepts no responsibility for the installation of any items outbound of the socket as this will be managed by the Visiting Company.

There are no larger supplies available outside the venue or cable passes into the venue.

# Stage

## Dimensions

Item	Detail
Proscenium	9.1m wide, 5.91m high.
Playing Area (Standard Masking)	9.1m wide, 9.4m deep from setting line (back of safety curtain line)
Grid Height	15m downstage
Flyfloor Height	6.6m downstage
Stage Rake	1:24 approx. to 7.3m upstage of Safety Curtain, then flat(ish) to rear wall.
Stage Surface	Hardboard, painted matt black – please check with house technical staff before using your own tape, as resulting damage will be recharged to your company.
Forestage / Pit	This is not a playing area due to sightlines and covering

## Flying

Qty	Item	Detail
37	3-line hemp rope sets, with cleat rail on SR fly floor.	<b>SWL – 80Kg Evenly Distributed</b>
30	Alloy 48mm (o/d) single flying bars, 11.72m long, with centre joining clamp.	<b>SWL – 80Kg Evenly Distributed</b>
1	LX 1 (winch 1) – Hand winch operated from SL, with a max height above stage: approx.7.3m	<b>SWL 450kg evenly distributed.</b>
3	LX 2 – 4 (Winch 2 -4) - Hand winch operated from SL, with a max height above stage: approx.7.9m.	<b>SWL 350kg evenly distributed per winch set</b>
8	Counterweight assists – to be fitted to bars as required. Installation takes approx. 1hr per bar. <b>Please call ahead to discuss this if required.</b>	<b>SWL 250Kg – PLEASE NOTE – should this be fitted to a standard 48mm flying bar then the safe working load is reduced to that of the bar – SWL 80Kg evenly distributed.</b>

### Please Note:

All flown items must be marked with accurate weight in Kg. Flying wire rope and fittings must have been tested, certificated and clearly marked with a SWL. Recorded evidence must be available if requested, of regular inspection as per the LOLER 1998

## Softs

Standard masking (positions are shown on ground plan and hanging plot)

Qty	Item	Size
5	Black Serge Legs (Pairs)	2.4m width, 7m drop.
4	Black Serge Borders	11.5m width, 3m drop.
1	Black Serge Half Tabs (Pair)	6m width, 7m drop.

Also available at cost: (Stored in Bags)

Qty	Item	Size
1	Black Serge Legs (Pair)	1.5m width, 7m drop.
1	Black Serge Border	11.5m width, 3m drop.
1	Black Serge Half Tabs	6m width, 7m drop.
1	Light Blue Filled Cloth	11.5m width x 7m drop.
1	Black Sharks tooth Gauze	11.5m width x 7m drop.
1	Black RGBW Star cloth	11.5m width x 7m drop

## Hard Equipment

Qty	Item	Size
20	Square Stage Weights	12.5Kg
-	Selection of Stage Braces	Short, Medium, long
6	Lite Deck Staging	8ft x 4ft with 9" legs to anti rake
2	Sets staging legs	1ft & 2ft inc anti rake

## Access Equipment

Qty	Item	Size
1	Tallescope	Platform Height - 3.9m - 5.9m
1	Zarges	5.5m Maximum working height
2	Zarges	3m Maximum working height
1	Fibreglass 5 Rung Step Ladder	1.8m Maximum working height

Please note – a minimum of 2 staff members are required to be at the bottom of the Tallescope, at all times, when in use.

## Orchestra Pit

Available by removing sections of forestage – See plan.

Qty	Item	Detail
38	RAT Stands	28 Lit
1	RAT Conductor Stand	Lit
48	Chairs	Padded seat and back

## Prompt Desk

Fixed Cue lights available to LX, Snd, Flys, MD.

4 - Cue lights able to be located around the stage area

Backstage calls/show relay to all dressing rooms and backstage areas.

## Environmental consideration

Where possible effects such as falling snow, greenery, confetti etc, should be as environmentally friendly as possible and made from recyclable materials.

The use of non-recyclable materials such as glitter should be avoided.

A surcharge may be applied for the disposal of non-recyclable effect materials and products.

## Wardrobe

All items are coin operated £1 coins

Qty	Item	Detail
1	Washing Machine	Front Loading
1	Tumble Dryer	
1	Steam iron and ironing board	

PLEASE NOTE: Wardrobe is located on the first floor and is only accessible by staircase, which does limit access to items such as wardrobe pans. There is no additional plumbing within the building for extra machines.

# Lighting

## Standard Rig

Please see separate document for current rig plan

## Dimmers

Qty	Item	Detail
136	ETC Sensor Dimmer	3k
4	ETC Sensor Dimmer	5k
2	ETC non-dim	

## Control

Qty	Item	Detail
1	ETC Ion XE	6144 Channels
1	ETC Nomad Backup	6144 Channels
1	Galaxy Tab 3	Riggers Remote
1	Response 4 port gateway	LX Box
1	Dedicated LX Wireless network	LX Box

## Control Position

Normal position for the house equipment is located within the house box on the SL pros.

An alternative control position, 1.2m x 1.2m, can be located at the back of the auditorium next to the sound desk if the seat holds have been agreed in advance. There is no space under the position to place any racks or control gear.

A control multicore of 50m min is required from SL to FOH, around the edge of the auditorium.

## Temporary Power

Lx Gallery Power

Qty	Item	Detail
1	125a Cee Form	3 Phase, Neutral, Earth
1	63a Cee Form	3 Phase, Neutral, Earth

Stage (MSL)

Qty	Item	Detail
1	125a Cee Form	3 Phase, Neutral, Earth
1	63a Cee Form	3 Phase, Neutral, Earth
1	Powerlock Outlet	3 Phase, Neutral, Earth

## Follow Spots

Qty	Item	Detail
2	Robert Juliet OZ follow spots	LED Source 1200w equivalent

## Additional fixtures

Please contact Technical ahead of arrival for availability and cost:

Qty	Item	Detail
12	Thomas Par 64	Various CP60/61/62
6	Cantata 18/32	
9	Cantata 26/44	
7	SL 15/32	
5	Prelude 28/40	
25	Cantata PC	
1	Source 4 25/50	
10	Quad Pix LED battens	Floor Mount
4	ETC Colour Source Par	

## FX

Please contact Technical ahead of arrival for availability and cost:

Qty	Item	Detail
2	Chauvet Hurricane Smoke Machines	Non-DMX - Fixed Remote
2	UV Cannons 400w	
2	Mirror Ball Motors 200/300/500 Balls	Non-DMX
2	Unique Hazer	
2	Showtec DMX Snow Machines	Additional cleaning charge
	Fluids for above	

## Accessories

Please contact Technical ahead of arrival for availability and cost:

Qty	Item	Detail
10	Cantata Iris	
Various	Gobo Holders	A & B Size
6	Tank Traps	
4	15a Socket Spiders	
2	15a Plug Spiders	

# Sound

## PA

### Stalls:

Qty	Item	Detail
4	Martin WT2 400w AES Running Bi-amp	
2	JBL Sub Bass Cabinets	
2	Martin iK42	

### Dress Circle:

Qty	Item	Detail
2	Martin WT2 400w AES Running Bi-amp	
2	Martin iK42	

### Upper Circle:

Qty	Item	Detail
2	Martin WT2 400w AES	
1	Martin iK42	

### Gallery:

Qty	Item	Detail
2	Martin AQ5	
1	Martin iK42	

### Front Fills:

Qty	Item	Detail
4	Martin DD6 150w AES	
1	Martin iK42	

## Control

Item
Allen and Heath D-Live C3500 Surface
Allen and Heath D-Live CDM48 Mix Rack
Dedicated Sound Control Network with Access Point
Allen and Heath DT168 Digital Stage box
Allen and Heath DT168 Digital Stage box SR (inputs 65-80, outputs 33-36)
Dante Network

## Mix Position

The mix position, 1.2m x 1.2m, is at the back of the auditorium next to the LX desk, if the seat holds have been agreed in advance. There is no space under the position to place any racks or control gear.

## Comms

Qty	Item	Detail
1	Wired GreenGo Belt pack - Beyer DT208 Headset	Prompt Desk
1	Wired GreenGo Belt pack - Beyer DT208 Headset	LX Control
1	Wired GreenGo Belt pack - Beyer DT208 Headset	Sound Control
2	Wired GreenGo Belt pack - Beyer DT208 Headset	Follow spots
1	Wired GreenGo Belt pack - Beyer DT208 Headset	
4	Wired GreenGo Belt pack - Beyer DT208 Headset	

## Temporary Power

Sound Power DSR

Qty	Item	Detail
1	32a Cee Form	3 Phase, Neutral, Earth – <b>40a RCB – not switchable</b>
1	63a Cee Form	3 Phase, Neutral, Earth – <b>RCCB – not switchable</b>
1	32a Cee Form	1 Phase, Neutral, Earth
1	63a Cee Form	1 Phase, Neutral, Earth – <b>RCCB – not switchable</b>

## Additional equipment

Please contact Technical ahead of arrival for availability and cost:

### Monitors:

Qty	Item	Detail
2	The Box Pro Achat 205	Pros Boom – NOT TO BE MOVED
2	The Box Pro Achat 206	Winch 3 – NOT TO BE MOVED
2	The Box Pro Achat 206	Winch 2 – NOT TO BE MOVED
4	Martin F12+ 12” + 1” Wedge 300w AES	
1	Martin iK42	Portable

### Microphones:

Qty	Item	Detail
6	Shure SM58	
3	Shure SM58 Beta	
1	AKG D112	
2	Shure SM57	
4	Sennheiser E604	
2	Sennheiser E904	
7	AKG C 391 B with CK91 Capsules	
3	Crown PCC160 Boundary Mics	
3	Sennheiser MHK416 Shotgun Mics	
4	BSS AR133 DI Box	
2	BSS AR116 DI Box	
2	Behringer Ultra DI	
4	Stellar Labs 50’s Style microphone – Dynamic	
2	Audio Technika AT2020 Diaphragm Condenser	

### Mic Stands:

Qty	Item	Detail
2	K&M Telescopic Mic Stand/Boom Black	
2	K&M Telescopic Mic Stand/Boom Black Short	
3	K&M Telescopic Low Boom Mic Stand Black tall	
6	Boom stands silver finish	
4	K&M 199 Mic Stand Black	
4	K&M 21140 Mic Stand Black	
1	K & M 25950 Short Mic Stand	
4	Banquet stands	

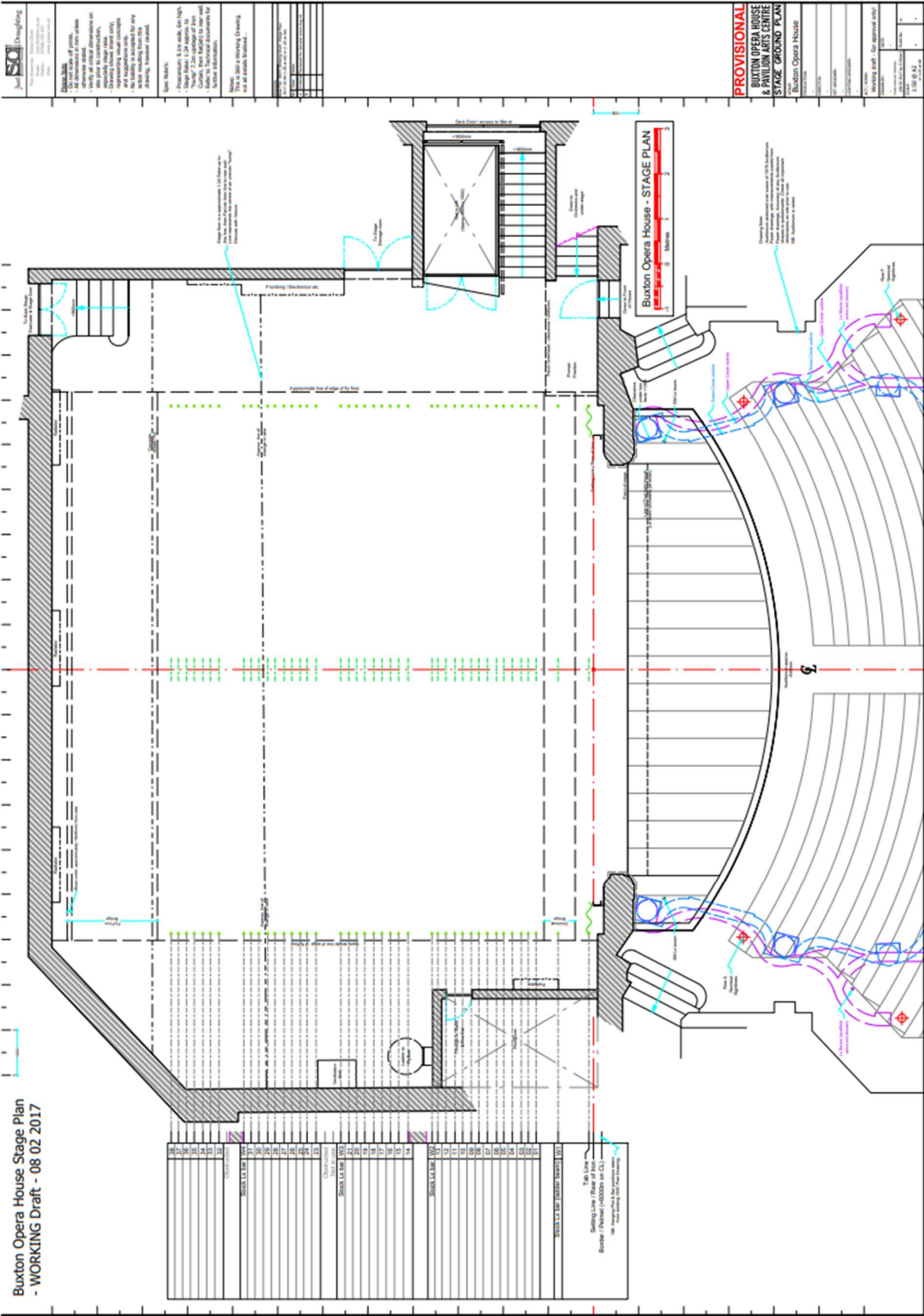
## Dressing Rooms

There are 8 dressing rooms that have a sink, with hot and cold-water supply and are fitted with lockable doors. The theatre does NOT have a band room or a green room – please allow for this when allocating dressing rooms. There are 2 separate unisex toilets and showers.

Room number	Usual capacity	Facilities
1	4	Toilet & shower
2	4	Toilet
4	8	
5	5	
6 (Company office)	6	
7	15	Toilet
8	6	
9	8	
<b>TOTAL CAPACITY</b>	56	

# Appendix A

## Stage Plan



## Appendix B

### Standard Hanging Plot

<u>BAR</u>	<u>Description</u>	<u>Distance from Setting Line</u>	<u>NOTES</u>
Setting Line	Back of Iron Curtain	0.00	
House Tabs	Counterweight	0.12	Operated from SR Flyfloor
W1	Lx1	0.36	
1		1.27	
2		1.34	
3	Black Border	1.61	
4	Black Legs with returns	1.80	
5		1.99	
6		2.15	
7		2.35	
8		2.54	
9		2.71	
10	Border	2.90	
11		3.07	
12		3.26	
13	Black Legs with returns	3.45	
W2	Lx2	3.57	
14	Full Blacks	4.10	
15		4.32	
16		4.49	
17		4.61	
18	Black Border	4.87	
19		5.06	
20		5.25	
21	Black Legs with returns	5.42	
W3	Lx3	5.59	
23		6.14	
24		6.35	
25		6.50	
26		6.68	
27		6.85	
28	Black Border	7.05	
29		7.22	Change of Rake on Stage
30		7.41	
31	Black Legs with returns	7.58	
W4	Lx4	7.74	
32		8.29	
33		8.48	
34		8.65	
35	Black Legs with returns	8.84	
36		9.01	
37		9.19	
38	Full Blacks	9.36	